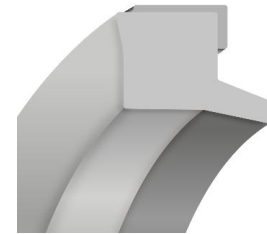


PCM is specially designed for cushioning pistons in pneumatic cylinders

Several elements contribute to the efficiency of the PCM seal braking system :





- the scraping profile with lead-in chamfer for better insertion of the shoulder
- the external grooves granting auto-alignment
- the edge at the bottom of the cushioning



**ADVANTAGES**

- the use of polyurethane ensures a long service life thanks to the high modulus of elasticity
- very good impact resistance

**TECHNICAL DATA**

	<b>pressure</b>	$\leq 2 \text{ Mpa}$
	<b>Speed</b>	$\leq 1 \text{ m/s}$
	<b>Temperature</b>	$-30^{\circ}\text{C}$ to $90^{\circ}\text{C}$
	<b>Material</b>	PU

