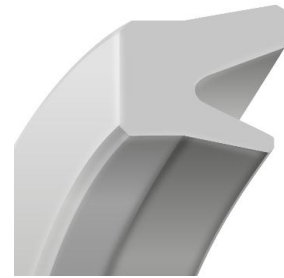






Rod seal type PSD has been developed with technical design features to overcome existing limits of similar seals on the market in order to obtain a smoother seal which is also more sensitive to low pressure.



ADVANTAGES

- a rounded dynamic lip improves linear movements
- a deeper U-profile between the dynamic and the static lip improves flexibility and performs better in case of misalignments in the system

TECHNICAL DATA

	Pressure	≤ 2 MPa
	Speed	≤ 1 m/s
	Temperature	-30°C to 90°C
	Material	PU

